

Designed exclusively for plumbing professionals, the John Wood® line of residential electric water heaters provides optimum reliability, performance and energy efficiency. With unique features and a broad range of models and sizes, there is a John Wood product to suit any application.

Features

Energy Savings

- Meets and exceeds NRCAN energy efficiency standards
- Wide variety of models available to meet energy efficiency compliance standards nationwide
- Styropour® base for added energy efficiency

Designed for Performance

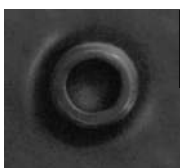
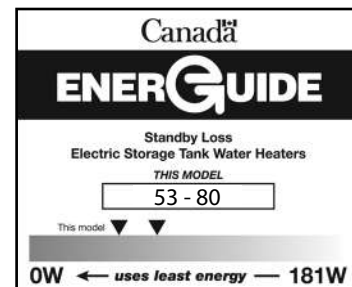
- Factory-installed plastic-lined heat trap nipples
- Exclusive TankSaver® design to prolong tank life
- Glass lined tank provides superior protection against corrosion
- Thermostatically controlled, long life elements
- Brass drain valve
- Quick recovery models available, suitable for the builder market
- CFC-free foam insulation

Serviceability

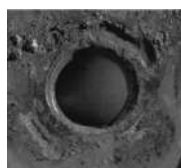
- Conveniently located T&P and drain valve for ease of installation and serviceability
- Removable anode

Exclusive Design

- The exclusive TankSaver design aids the glass lining process to ensure optimum coverage, and guards tank openings for watertight connections



With
TankSaver



Without
TankSaver



WARRANTY

8 Year Limited Tank Warranty

6 Year Limited Parts Warranty

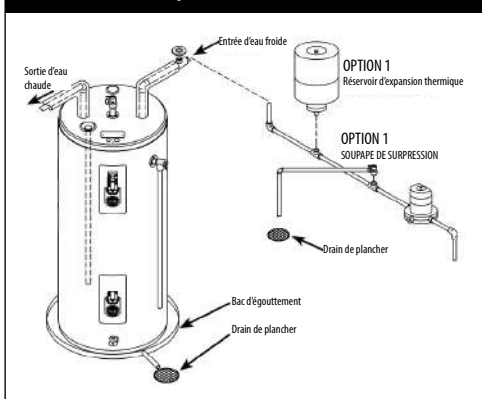
Consult installation manual for terms and conditions or visit www.johnwoodwaterheaters.com for more information.



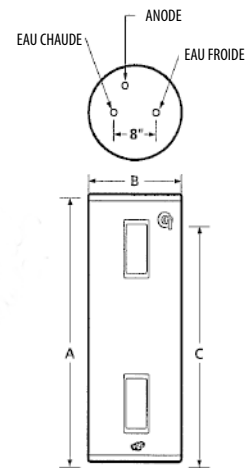
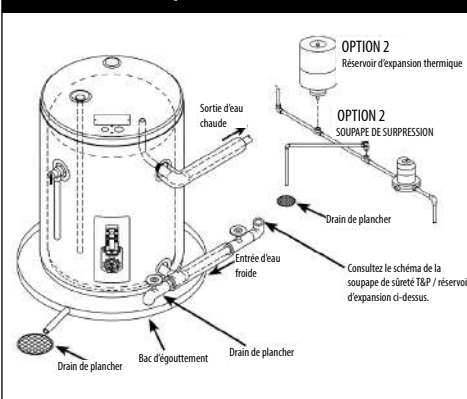
SPECIFICATIONS

| Model | Series | Capacity | | | Elements (Upper and Lower) | | Standby Loss | First Hour Rating | Height to Top of Tank A | Diameter B | Shipping Weight | BC/ON Compliant |
|-----------------------------------|--------|----------|-----|--------|----------------------------|-------|--------------|-------------------|-------------------------|------------|-----------------|-----------------|
| | | IG | USG | LITRES | WATTS | VOLTS | | | | | | |
| TOP ENTRY | | | | | | | | | | | | |
| JW850SDE-30X | 250 | 40 | 50 | 182 | 3000 | 208 | 53 | 60 (227) | 48¾ (124) | 22 (56) | 125 (57) | √ |
| JW850SDE-30 | 250 | 40 | 50 | 182 | 3000 | 240 | 53 | 60 (227) | 48¾ (124) | 22 (56) | 125 (57) | √ |
| JW850SDE1-30X | 260 | 40 | 50 | 182 | 3000 | 208 | 69 | 60 (227) | 48 (122) | 21½ (55) | 121 (55) | - |
| JW850SDE1-30 | 260 | 40 | 50 | 182 | 3000 | 240 | 69 | 60 (227) | 48 (122) | 21½ (55) | 121 (55) | - |
| JW850SDE-45X | 250 | 40 | 50 | 182 | 4500 | 208 | 53 | 60 (227) | 48¾ (124) | 22 (56) | 125 (57) | √ |
| JW850SDE-45 | 250 | 40 | 50 | 182 | 4500 | 240 | 53 | 60 (227) | 48¾ (124) | 22 (56) | 125 (57) | √ |
| JW850SDE1-45X | 260 | 40 | 50 | 182 | 4500 | 208 | 69 | 60 (227) | 48 (122) | 21½ (55) | 121 (55) | - |
| JW850SDE1-45 | 260 | 40 | 50 | 182 | 4500 | 240 | 69 | 60 (227) | 48 (122) | 21½ (55) | 121 (55) | - |
| JW850SDE-55X | 250 | 40 | 50 | 182 | 5500 | 208 | 53 | 60 (227) | 48¾ (124) | 22 (56) | 125 (57) | √ |
| JW850SDE-60 | 250 | 40 | 50 | 182 | 6000 | 240 | 53 | 60 (227) | 48¾ (124) | 22 (56) | 125 (57) | √ |
| JW850SDE1-55X | 260 | 40 | 50 | 182 | 5500 | 208 | 69 | 60 (227) | 48 (122) | 21½ (55) | 121 (55) | - |
| JW850SDE1-60 | 260 | 40 | 50 | 182 | 6000 | 240 | 69 | 60 (227) | 48 (122) | 21½ (55) | 121 (55) | - |
| JW880TDE-30X | 250 | 60 | 80 | 287 | 3000 | 208 | 78 | 81 (307) | 60½ (154) | 24 (61) | 170 (77) | √ |
| JW880TDE-30 | 250 | 60 | 80 | 287 | 3000 | 240 | 78 | 81 (307) | 60½ (154) | 24 (61) | 170 (77) | √ |
| JW880TDE-45X | 250 | 60 | 80 | 287 | 4500 | 208 | 78 | 81 (307) | 60½ (154) | 24 (61) | 170 (77) | √ |
| JW880TDE-45 | 250 | 60 | 80 | 287 | 4500 | 240 | 78 | 81 (307) | 60½ (154) | 24 (61) | 170 (77) | √ |
| JW880TDE-55X | 250 | 60 | 80 | 287 | 5500 | 208 | 78 | 81 (307) | 60½ (154) | 24 (61) | 170 (77) | √ |
| JW880TDE-60 | 250 | 60 | 80 | 287 | 6000 | 240 | 78 | 81 (307) | 60½ (154) | 24 (61) | 170 (77) | √ |
| TOP ENTRY, INCOLOY ELEMENT | | | | | | | | | | | | |
| JW850SDE1-38 | 260 | 40 | 50 | 182 | 3800 | 240 | 69 | 60 (227) | 48 (122) | 21½ (55) | 121 (55) | - |
| JW850SDE-38 | 250 | 40 | 50 | 182 | 3800 | 240 | 53 | 60 (227) | 48¾ (124) | 22 (56) | 125 (57) | √ |
| JW880TDE-38 | 250 | 60 | 80 | 287 | 3800 | 240 | 78 | 81 (307) | 60½ (154) | 24 (61) | 170 (77) | √ |
| BOTTOM ENTRY | | | | | | | | | | | | |
| JW850SDEB-30X | 250 | 40 | 50 | 182 | 3000 | 208 | 65 | 60 (227) | 48 (122) | 22 (56) | 122 (55) | √ |
| JW850SDEB-30 | 250 | 40 | 50 | 182 | 3000 | 240 | 65 | 60 (227) | 48 (122) | 22 (56) | 122 (55) | √ |
| JW850SDEB-45X | 250 | 40 | 50 | 182 | 4500 | 208 | 65 | 60 (227) | 48 (122) | 22 (56) | 122 (55) | √ |
| JW850SDEB-45 | 250 | 40 | 50 | 182 | 4500 | 240 | 65 | 60 (227) | 48 (122) | 22 (56) | 122 (55) | √ |
| JW880TDEB-30X | 250 | 60 | 80 | 287 | 3000 | 208 | 80 | 81 (307) | 60½ (154) | 24 (61) | 170 (77) | √ |
| JW880TDEB-30 | 250 | 60 | 80 | 287 | 3000 | 240 | 80 | 81 (307) | 60½ (154) | 24 (61) | 170 (77) | √ |
| JW880TDEB-45X | 250 | 60 | 80 | 287 | 4500 | 208 | 80 | 81 (307) | 60½ (154) | 24 (61) | 170 (77) | √ |
| JW880TDEB-45 | 250 | 60 | 80 | 287 | 4500 | 240 | 80 | 81 (307) | 60½ (154) | 24 (61) | 170 (77) | √ |

INSTALLATION TYPIQUE - MODÈLES À ENTRÉE PAR LE HAUT



INSTALLATION TYPIQUE - MODÈLES À ENTRÉE PAR LE BAS



All John Wood electric water heaters listed on this spec sheet have a maximum temperature setting of 150°F.