



Residential Electric Water Heaters

Featuring a variety of models designed for installations in cottages, offices, mobile homes or other applications where space is limited, the Space Saver® line of residential electric water heaters provides optimum reliability, performance and energy efficiency.

DESIGNED FOR PERFORMANCE

- Exclusive TankSaver® design
- Glass-lined tanks for longer life
- Meets latest energy efficiency standards
- Factory-installed plastic-lined nipples
- Patented Styropour® base for added energy efficiency
- Thermostatically controlled long life elements
- CFC-free foam insulation
- Personnel protector covers elements and controls

EASY TO INSTALL AND REPAIR

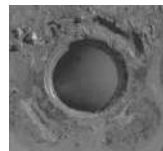
- Conveniently located T&P and drain valve
- Removable anodes

WARRANTY

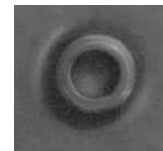
- 6 year limited tank warranty
- 1 year limited parts warranty

EXCLUSIVE DESIGN

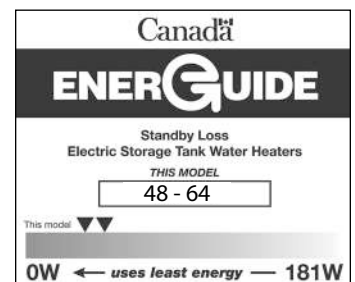
- The exclusive TankSaver design aids the glass lining process to ensure optimum coverage, and guards tank openings for watertight connections



Without TankSaver



With TankSaver





Residential Electric Water Heaters

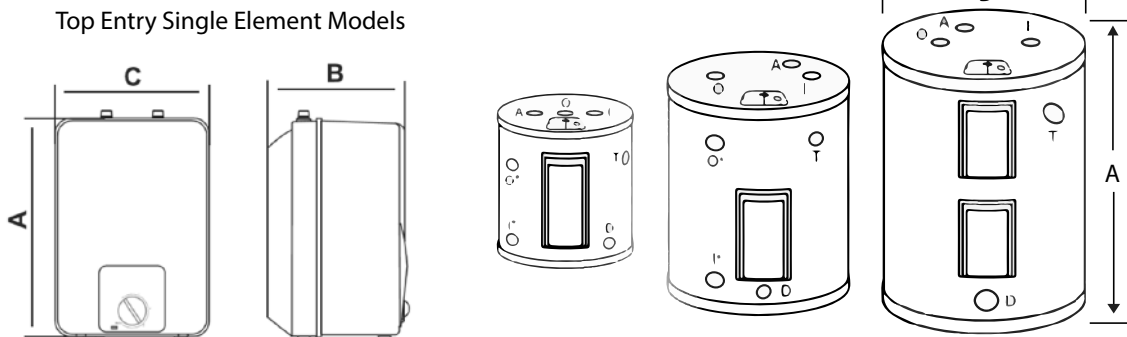
| SPECIFICATIONS | | | | | | | | | | | | | | |
|---|--------|----------|-----|-----|--------|-------|--|--------------|-----------|-----------|-----------|----------|-----------------|--------------------|
| Model | Series | Capacity | | | Input | | Recovery Rate at 90°F Temperature Rise | Standby Loss | Height | Diameter* | | Width | Shipping Weight | BC/ON/QC Compliant |
| | | IG | USG | L | WATTS | VOLTS | | | | GPH (LPH) | WATTS | | | |
| TOP ENTRY SINGLE ELEMENT MODELS | | | | | | | | | | | | | | |
| SS025SE15 | 100 | 2 | 2.5 | 9 | 1440 | 120** | 7 (26) | N/A | 14 ½ (37) | 10 ¾ (26) | 11 ¾ (30) | 17 (8) | √ | |
| SS04SE15 | 100 | 3 | 4 | 15 | 1440 | 120** | 7 (26) | N/A | 19 ¼ (49) | 10 ¾ (26) | 11 ¾ (30) | 20 (9) | √ | |
| BOTTOM ENTRY SINGLE ELEMENT MODELS | | | | | | | | | | | | | | |
| SS06SEB15 | N/A | 5 | 6 | 23 | 1500 | 120 | 7 (26) | N/A | 15 ¼ (39) | 14 ¼ (36) | N/A | 35 (16) | √ | |
| SS06SEB30 | N/A | 5 | 6 | 23 | 3000+ | 240 | 14 (53) | N/A | 15 ¼ (39) | 14 ¼ (36) | N/A | 35 (16) | √ | |
| SS12SEB15 | N/A | 9 | 12 | 43 | 1500 | 120 | 7 (26) | N/A | 22 ¾ (58) | 16 (41) | N/A | 55 (25) | √ | |
| SS12SEB30 | N/A | 9 | 12 | 43 | 3000+ | 240 | 14 (53) | N/A | 22 ¾ (58) | 16 (41) | N/A | 55 (25) | √ | |
| SS620SSEB-15K | 100 | 14 | 19 | 65 | 1500 | 120 | 7 (26) | 51 | 25 ½ (65) | 20 (51) | N/A | 65 (30) | √ | |
| SS620SSEB-30 | 100 | 14 | 19 | 65 | 3000+ | 240 | 14 (53) | 51 | 25 ½ (65) | 20 (51) | N/A | 65 (30) | √ | |
| SS630SSEBN-15K | 100 | 22 | 30 | 108 | 1500 | 120 | 7 (26) | 48 | 30 (76) | 22 (56) | N/A | 101 (46) | √ | |
| SS630SSEBN-30 | 100 | 22 | 30 | 108 | 3000+ | 240 | 14 (53) | 48 | 30 (76) | 22 (56) | N/A | 101 (46) | √ | |
| TOP ENTRY DOUBLE ELEMENT MODELS | | | | | | | | | | | | | | |
| SS640SDE3-15K | 100 | 30 | 40 | 143 | 1500 | 120 | 7 (26) | 54 | 50 (127) | 20 (51) | N/A | 103 (47) | √ | |
| SS640SDE3-30X | 100 | 30 | 40 | 143 | 3000 | 208 | 14 (53) | 54 | 50 (127) | 20 (51) | N/A | 103 (47) | √ | |
| SS640SDE3-30 | 100 | 30 | 40 | 143 | 3000+ | 240 | 14 (53) | 54 | 50 (127) | 20 (51) | N/A | 103 (47) | √ | |
| LOWBOY TOP ENTRY DOUBLE ELEMENT MODELS | | | | | | | | | | | | | | |
| SS630LDE-45X | 250 | 22 | 30 | 108 | 4500** | 208 | 20 (76) | 53 | 31 (79) | 22 (56) | N/A | 96 (44) | ON/QC only | |
| SS630LDE-45 | 250 | 22 | 30 | 108 | 4500** | 240 | 20 (76) | 53 | 31 (79) | 22 (56) | N/A | 96 (44) | ON/QC only | |
| SS640LDE-45X | 250 | 30 | 40 | 143 | 4500** | 208 | 20 (76) | 62 | 33 ½ (85) | 24 (61) | N/A | 113 (51) | ON/QC only | |
| SS640LDE-45 | 250 | 30 | 40 | 143 | 4500** | 240 | 20 (76) | 62 | 33 ½ (85) | 24 (61) | N/A | 113 (51) | ON/QC only | |
| SS650LDEN-45 | 280 | 40 | 50 | 181 | 4500 | 240 | 20 (76) | 64 | 37 ¾ (96) | 26 ½ (67) | N/A | 170 (77) | - | |

*Depth on model SS025SE15 and SS04SE15.

**Plug-in model.

*Model is dual-rated. At 208V wattage is 2253.

**Model is dual-rated. At 208V wattage is 3380.



***Note: 6, 12 and 19 USG models have side connections on left side.